

Install the driver

The first step, insert the RTL-SDR software radio receiver.

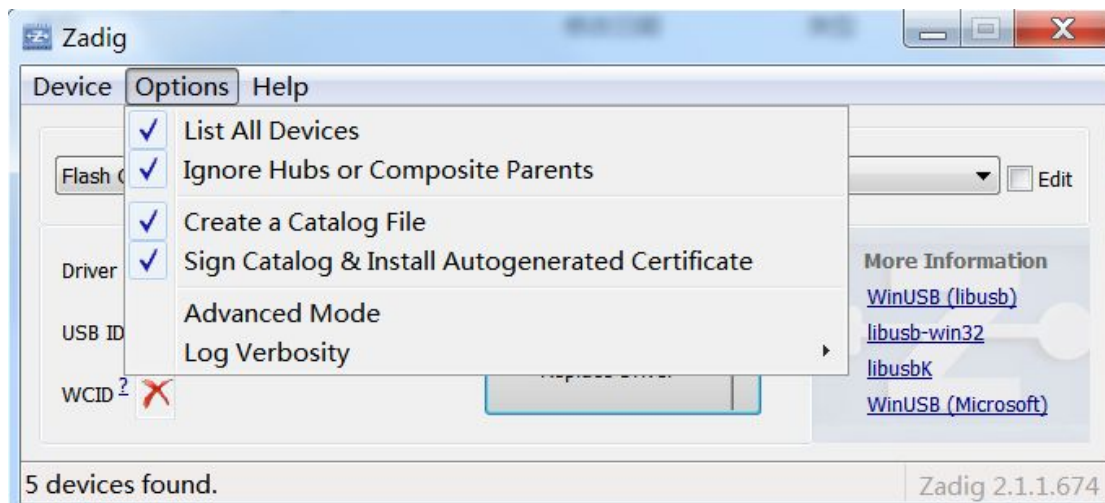
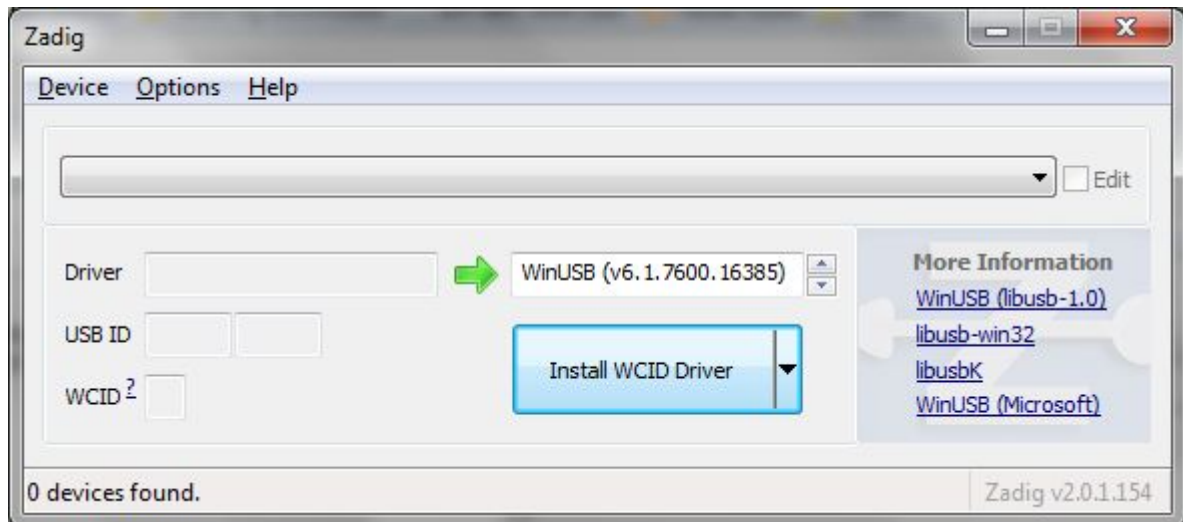
1. XP prompts the found new hardware, the driver is installed automatically, select No.

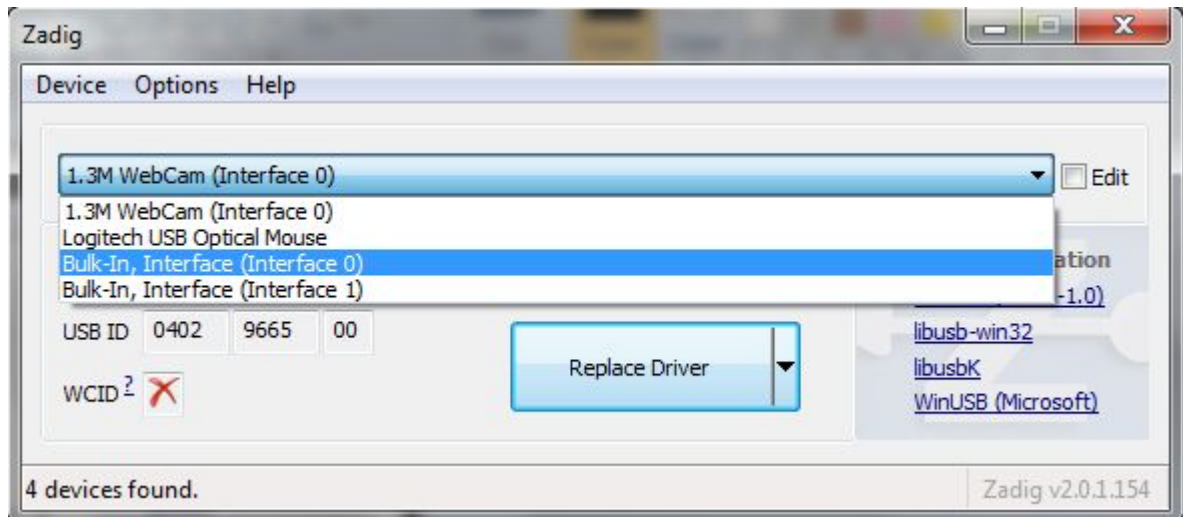
2. windows 7 indicates the found new hardware, and automatic search driven, cancel.

The second step, install the Zadig driver.

1. The XP system, installed [zadig-xp](#);

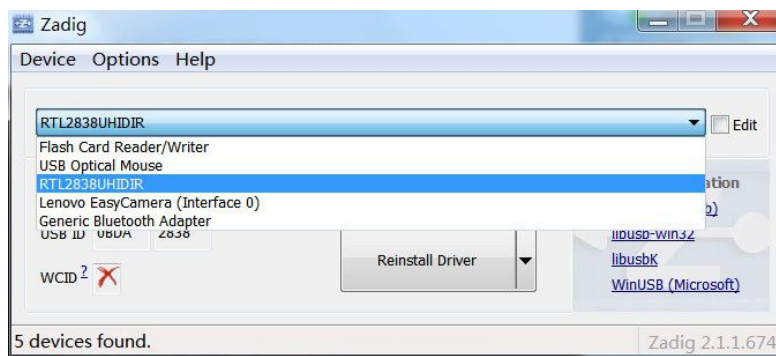
2. Other Windows versions (WIN7, WIN8, VISTA), [zadig_win8](#) installation.





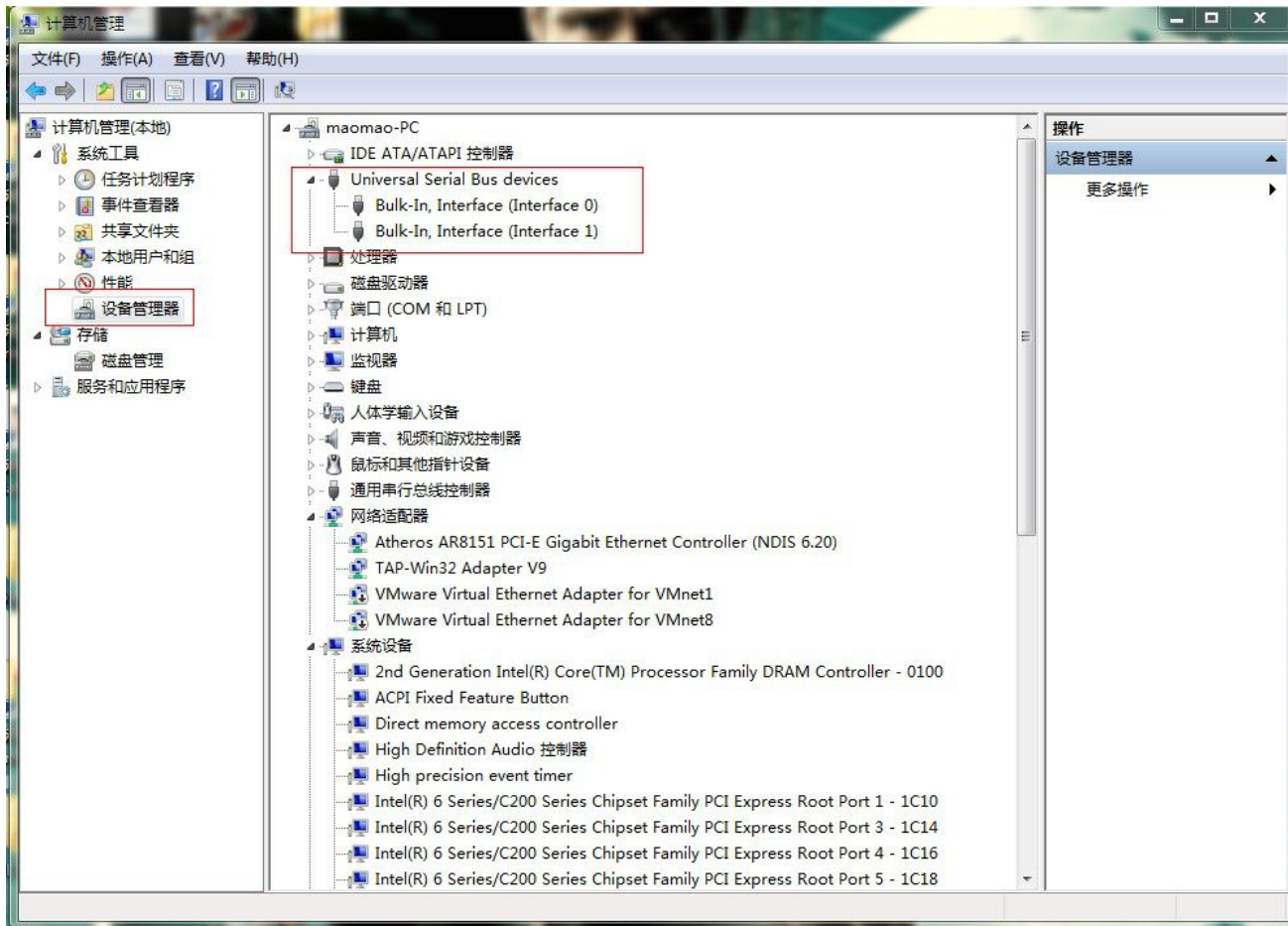
1. Running zading, click options, select list all devices,select bulk-in from the drop-down list, **interface(interface0)**, **interface(interface1)**, green arrow on the right side of the default WinUsb, and then click installl driver.

It may also

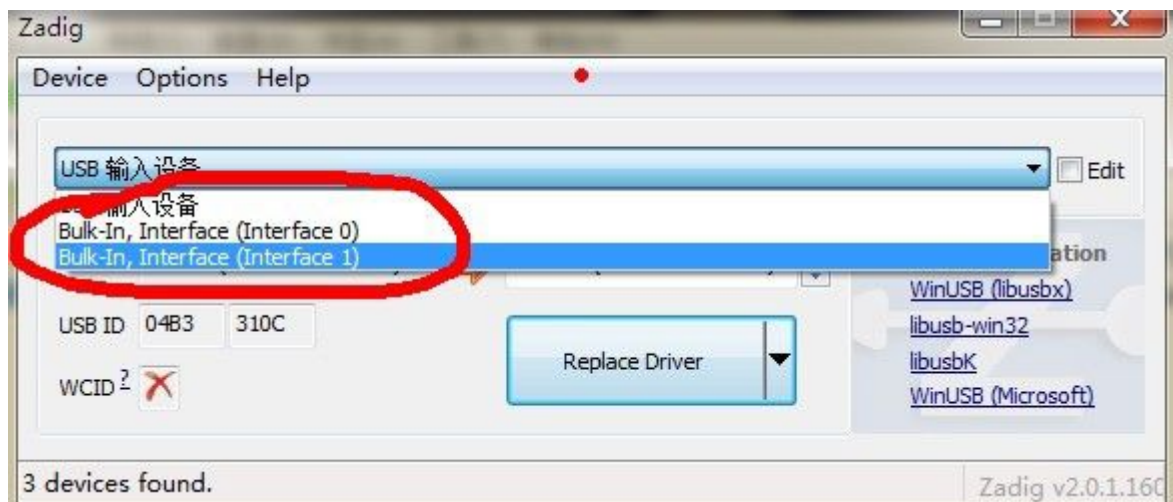
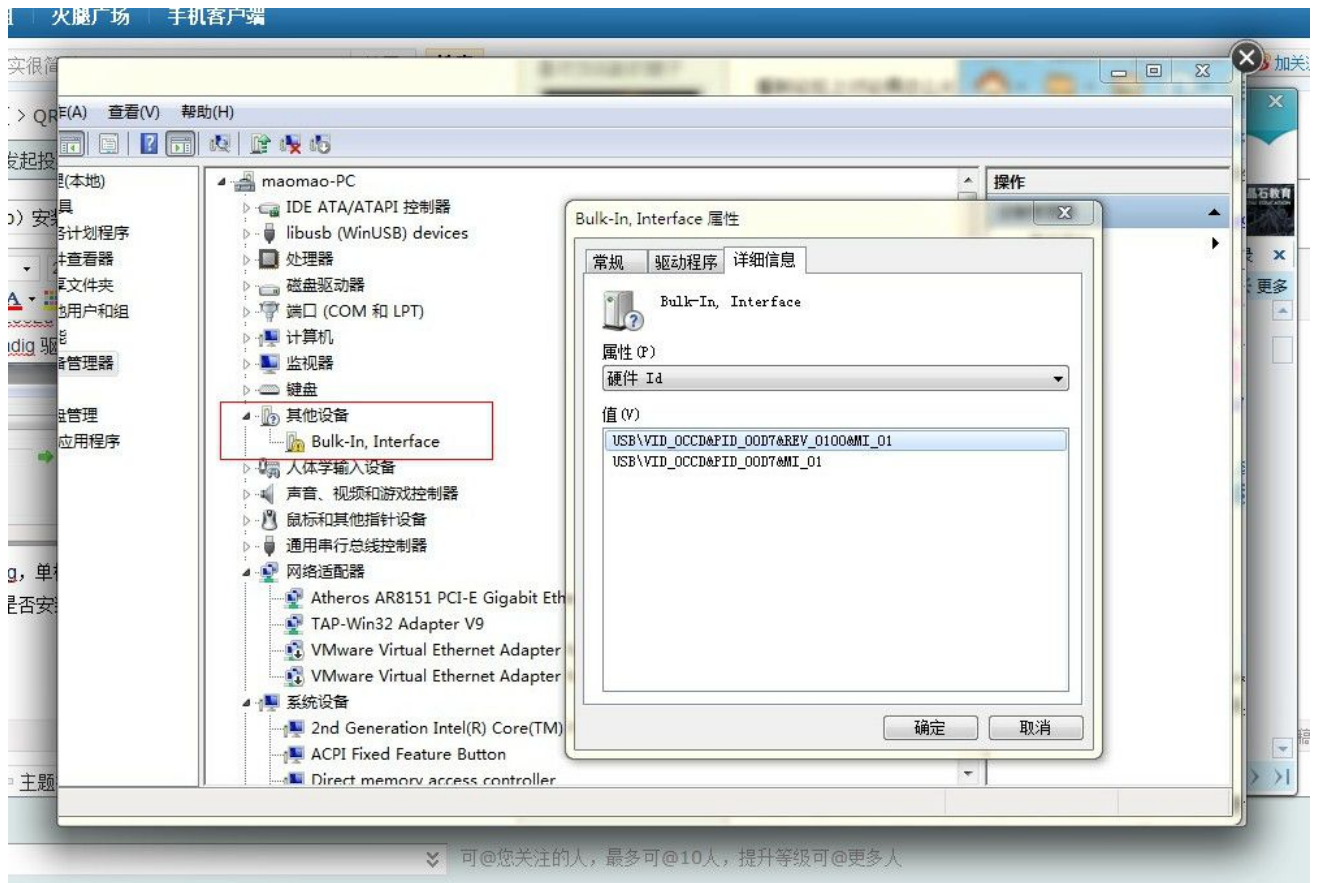


display **RTL2838UHITIR** ,then select **RTL2838UHITIR** and click installl driver.

2 . Check the driver is installed to complete. Desktop right click my computer, click manage, select the device manager in the list on the left, as shown on the right can be seen driving has completed the installation.



3. If such as below, yellow exclamation mark display device name, that driver not installed. Run zading again, select bulk-in from the drop-down list, interface (interface 1), and then install a driver can be.



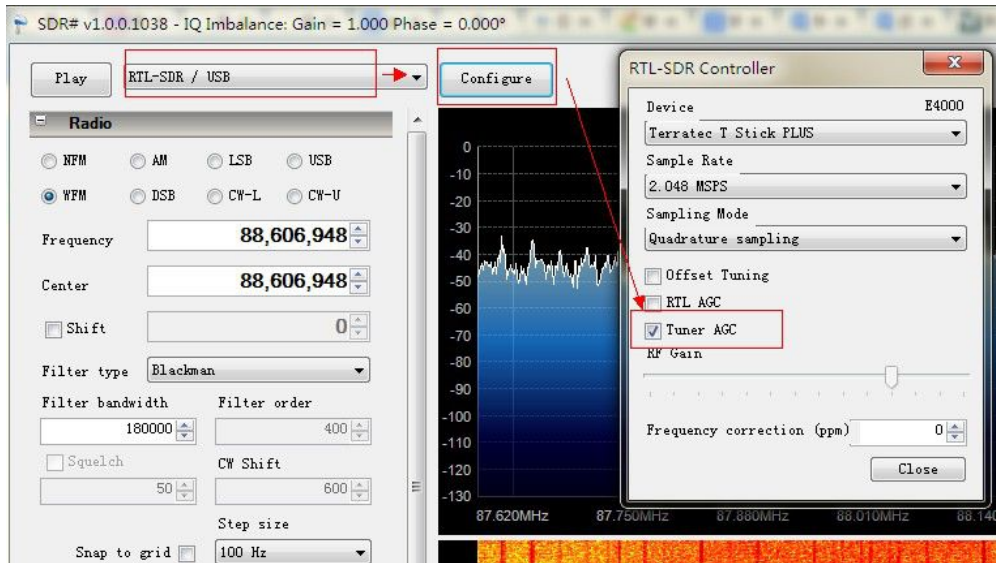
The third step, run SDRSharp.exe.

Receiving the 25MHz-1.7GHz VHF and UHF. (FM radio, air phone, walkie talkie, television sound etc.)

1, **Connect the antenna** : Connect UV antenna in the 25MHz-1.7GHz interface, the best use of the antenna gain is high, such as the UV car Taiwan omnidirectional antenna, Yagi antenna etc..

2, **Setting**: select RTL-SDR/USB drop-down list in the

top left corner, to the right of configure, check the tuner agc. Click Close to exit setup. When you click the upper left corner of the Play (start). With the red pointer drag the mouse right upper frequency can be adjusted.



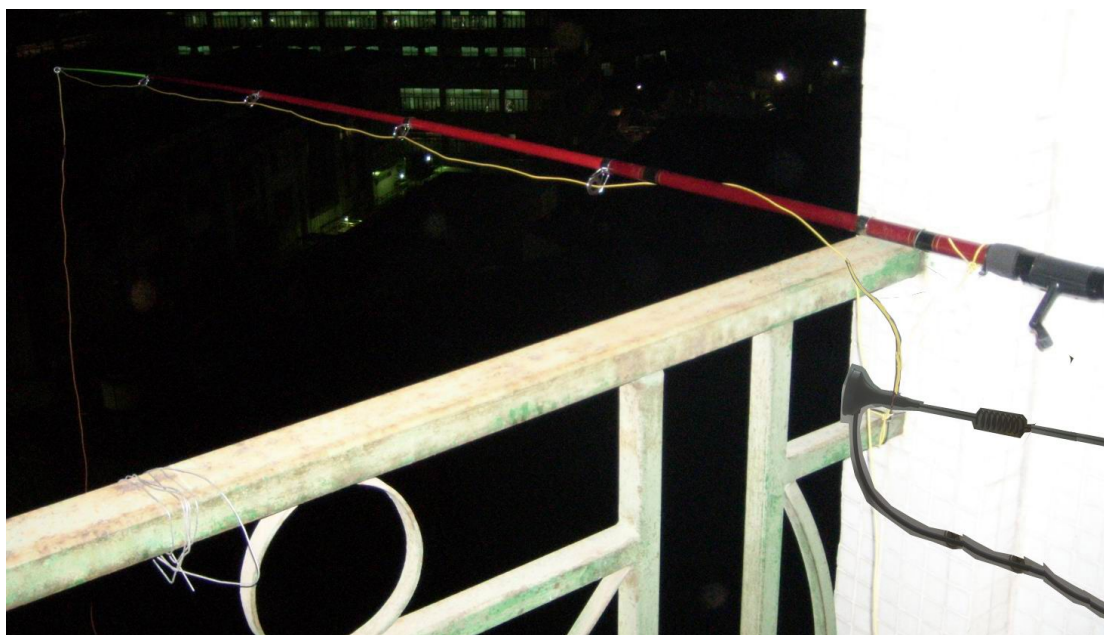
Receive 100KHz-30MHz, contains LF, MF and HF (radio AM, single sideband amplitude newspaper CW SSB, etc.):

1. **Connecting antenna.** Connect HF antenna in 100KHz-30MHz interface.
2. **Setting** . Shutdown state, select the RTL-SDR/USB drop-down list in the top left corner, to the right of Configure, in the Sampling Mode following Direct sampling (Q branch) select tick RTL AGC and then Close, then Play. To the required frequency modulation mode, select the corresponding:

Note: if the receiving WFM software automatically exit, or The software can't normal open, please install Microsoft .NET Framework 3.5

HF antenna length should be at least 7 meters preferably greater than 10 meters, or can not receive HF.

Using the following method can improve the receiving of the antenna (For reference) Each band applies

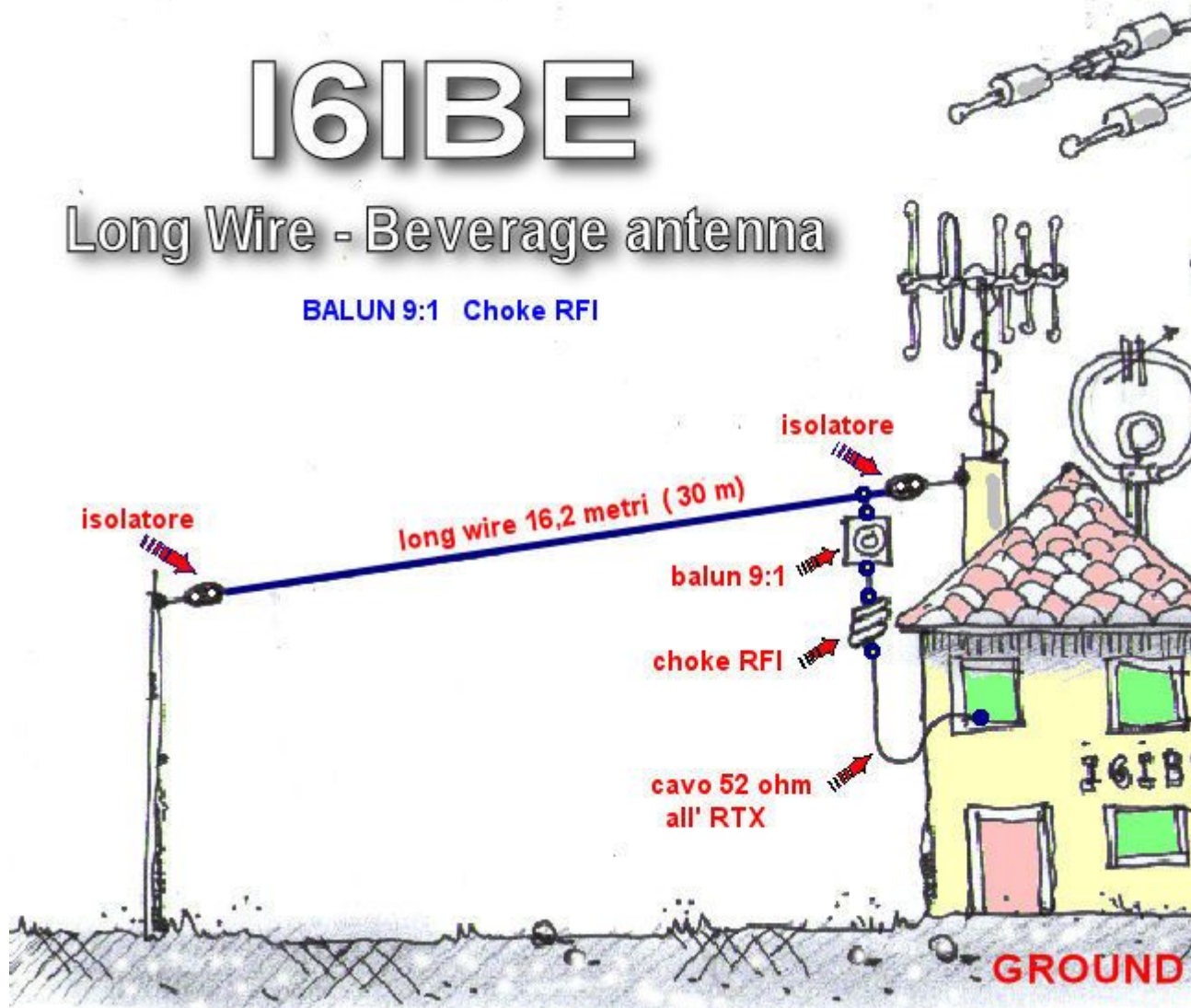


<http://www.radioamatoripeligni.it/i6ibe/balun9a1/balun9a1.htm>

I6IBE

Long Wire - Beverage antenna

BALUN 9:1 Choke RFI



线长
(米)

53.3
51.5
49.4
44.5
41.1
37.8
29.9
26.8
21.9
18
16
14.9
13.4
11
8.8
7.3

Wire Length Feet	1.8 MHz	3.7 MHz	5.3 MHz	7.1 MHz	10.1 MHz	14.2 MHz	18.1 MHz	21.2 MHz	24.9 MHz
175	1.2	1.6	1.1	1.1	1.1	1.8	1.3	1.6	1.7
169	1.4	1.2	1.2	1.2	1.2	2.1	1.4	1.4	1.5
162	1.4	1.5	1.7	1.3	1.6	1.8	1.9	1.1	1.5
146	1.7	1.5	1.4	1.4	2.4	1.5	1.3	1.2	1.4
135	2.0	1.4	1.3	1.8	1.6	2.0	2.0	1.7	1.5
124	<u>1.3</u>	<u>1.3</u>	<u>1.2</u>	<u>1.3</u>	<u>1.7</u>	<u>1.6</u>	<u>1.8</u>	<u>1.6</u>	<u>1.4</u>
98	1.8	1.7	1.4	1.7	2.3	1.9	1.4	1.2	1.7
88	1.8	2.2	1.7	2.3	1.9	1.3	2.0	1.8	1.4
72	2.0	2.0	1.4	1.2	1.2	1.9	1.9	1.5	1.1
59	1.6	1.6	1.3	1.5	2.0	1.5	2.0	1.1	1.7
52.5	<u>1.6</u>	<u>1.4</u>	<u>1.2</u>	<u>1.1</u>	<u>1.5</u>	<u>1.1</u>	<u>1.9</u>	<u>1.2</u>	<u>1.1</u>
49	1.5	1.3	1.4	2.4	2.4	1.3	1.6	1.6	1.4
44	3.0	1.2	1.5	2.1	2.1	1.7	1.3	1.7	1.6
36	2.2	1.2	1.3	1.3	1.3	2.0	1.6	1.2	1.7
29	3.0	1.3	1.3	1.2	1.2	2.1	2.0	1.3	1.2
24	3.2	1.7	1.6	1.6	1.6	1.4	2.1	1.8	1.3