

Please read this installation guide before installing the USB driver.

- This installation guide describes how to install the USB driver included in the Icom product's CD. If you download the USB driver from the Icom Download Service, specify the folder to store the driver.

**NOTE:** The descriptions in this guide are based on Windows 8 and Windows 7.

**For Windows Vista and Windows XP:**

Refer to the Windows 7 instructions because the operations for Windows Vista and Windows XP are similar to Windows 7.

## TABLE OF CONTENTS

<b>1. OVERVIEW</b> .....	<b>1</b>	<b>3. DRIVER INSTALLATION</b> .....	<b>3-6</b>
<b>2. PRECAUTIONS</b> .....	<b>2</b>	<b>4. FOR YOUR REFERENCE</b> .....	<b>7-10</b>
Before installation .....	2	4-1 COM Port setting .....	7
Before connecting to a PC .....	2	4-2 Uninstalling the driver .....	9
Important.....	2	4-3 Audio considerations .....	10
After installation .....	2		
About compatible products .....	2		

## 1. OVERVIEW

### System requirements

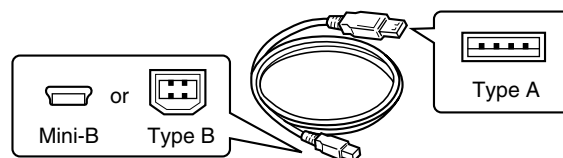
To install the driver, the following hardware and software are required:

**PC**

- Microsoft® Windows® 8 (32/64 bit)\*, Microsoft® Windows® 7 (32/64 bit), Microsoft® Windows Vista® (32/64 bit) or Microsoft® Windows® XP (32 bit) OS
- \*Except for Microsoft® Windows® RT.
- A USB 1.1, 2.0 or 3.0 port

**Cable**

- A USB cable



**NOTE:**

- Icom is not responsible for problems using a PC with one of the above OSs installed.
- The USB driver cannot be used with the 64 bit version of Microsoft® Windows® XP.
- In this installation guide, the above OSs are described as “Windows 8,” “Windows 7,” “Windows Vista” and “Windows XP.”

**NOTE:**

- Depending on the length of a 3rd party USB cable, the transceiver may not operate properly even if it is recognized by the PC. Use as short a cable as possible.
- Depending on the transceiver, the USB port shape may differ. If you use a 3rd party USB cable, be sure to check the port shape, before purchasing the cable.
- This guide is based on using a transceiver with a Mini-B type USB port.

### USB driver downloading

The latest driver can be downloaded from here.

<http://www.icom.co.jp/world/index.html>

Access the above URL, and download the driver from the “Support” menu ([Support]→“Firmware Updates/Software Downloads”)\*.

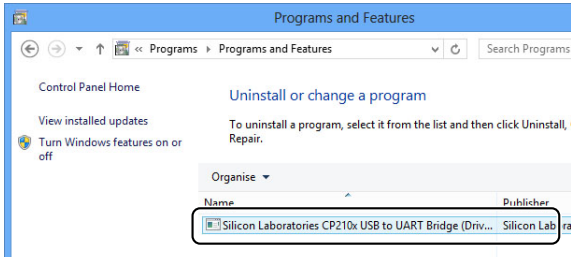
\*The procedures may be changed without notice.

Icom, Icom Inc. and the Icom logo are registered trademarks of Icom Incorporated (Japan) in Japan, the United States, the United Kingdom, Germany, France, Spain, Russia and/or other countries.  
Microsoft, Windows and Windows Vista are registered trademarks of Microsoft Corporation in the United States and/or other countries.  
All other products or brands are registered trademarks or trademarks of their respective holders.

## 2. PRECAUTIONS

### Before installation

- When installing the driver, log on as the administrator.
- Make sure no other applications are running.
- When a previous version driver is installed on your PC, the driver name “Silicon Laboratories CP210x USB to UART Bridge (Driver Removal)” is displayed on the Control Panel screen, as shown below. In this case, uninstall it before installing this driver. See “Uninstalling the driver” on page 9 for details.



(Windows 8 screen is shown.)

### Before connecting to a PC

The USB driver is not supported by the automatic recognition system, so **NEVER** connect the USB cable between the transceiver and the PC until AFTER the USB driver has been installed.

See “Driver installation” on page 3 for details.

- Once the driver is installed, a PC software can be used by just connecting the USB cable.

### Important

- Depending on your PC performance (OS, environment, and so on), the USB audio may be interrupted, or a control by the PC software may get delayed.
- If the CPU has a heavy load, the USB audio is easily interrupted.
- The settings of the installed audio player may be changed after connecting the transceiver to the PC.
- Icom is not responsible for improper operation when connecting the transceiver and the PC through a USB hub.

### After installation

#### Uninstalling the USB driver

You cannot uninstall the USB driver for each individual unit. After uninstalling the USB driver, none of the transceivers that require this driver can be operated with the PC.

#### When another transceiver is connected

The COM port number is automatically added after turning ON the transceiver's power.

### About compatible products

The products that require this driver are shown on the Icom website (<http://www.icom.co.jp/world/index.html>).

### 3. DRIVER INSTALLATION

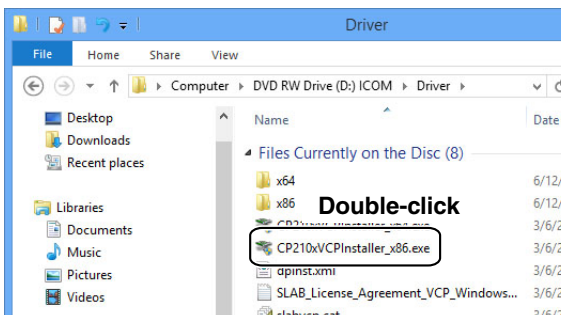
#### Windows 8

##### NOTE:

- **NEVER** connect the USB cable between the transceiver and the PC until AFTER the USB driver has been installed.
- This USB driver is not supported by the automatic recognition system.

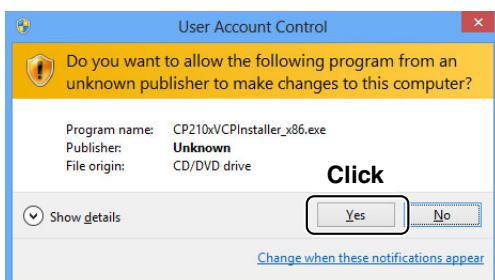
The displayed dialogue boxes, indications or operations may differ slightly from the following instructions, depending on your system version and settings.

- ① Make sure that the transceiver and PC are not connected.
- ② Start Windows.
  - Quit all other applications if any are running.
- ③ Double-click the USB driver installer in the “Driver” folder.
  - If you want to install to the 32 bit version OS, double-click “CP210xVCPInstaller\_x86.exe.”
  - If you want to install to the 64 bit version OS, double-click “CP210xVCPInstaller\_x64.exe.”

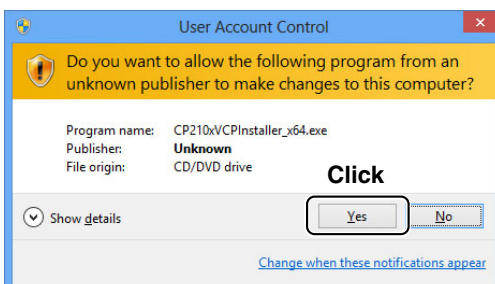


(32 bit version screen is shown.)

- ④ When the “User Account Control” dialogue box appears, click [Yes].



(32 bit version screen is shown.)

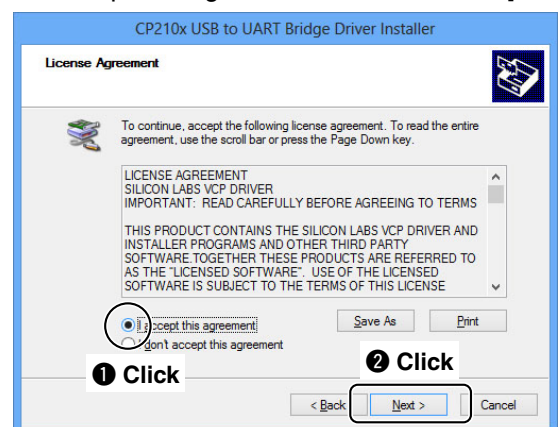


(64 bit version screen is shown.)

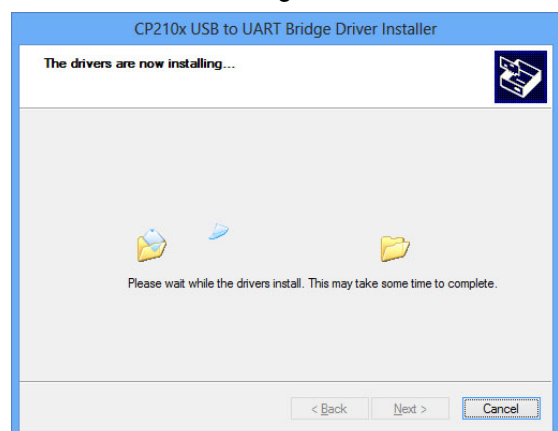
- ⑤ When the install screen appears, click [Next].



- ⑥ The “License Agreement” dialogue box appears. Read the agreement, and click the radio button next to “I accept this agreement,” and then click [Next].



- ⑦ Windows starts installing the driver.

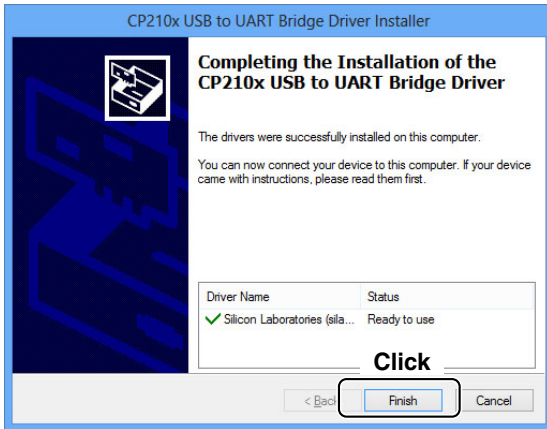


Continued on the next page.

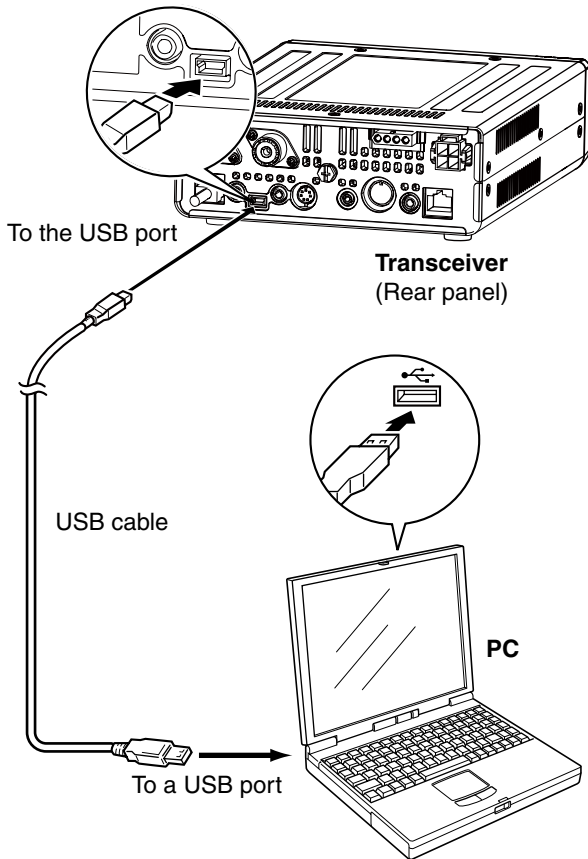
### 3. DRIVER INSTALLATION

#### Windows 8 (Continued)

- ⑧ After the installation has completed, click [Finish].



- ⑨ Connect the USB cable between the transceiver and the PC, as shown below. Then, turn ON the transceiver's power.
- Be sure to check the USB cable connector shape.



- ⑩ The installation icons appear on the taskbar shown below, then Windows starts installing the driver.
- The USB audio driver is also automatically installed.



- ⑪ After the driver installation has completed, the installation icons disappear.

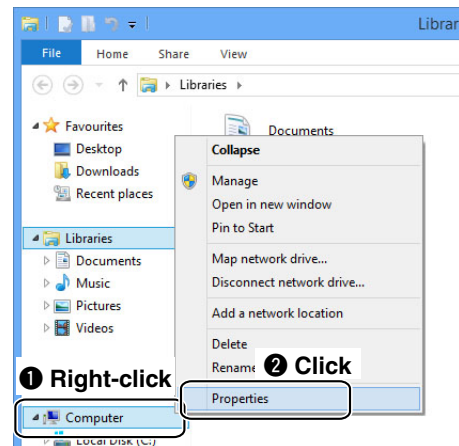
Depending on your system version and settings, you may be prompted to restart the PC. In this case, follow the instructions on the screen.

After the driver installation has been completed, confirm the port connection and port number.

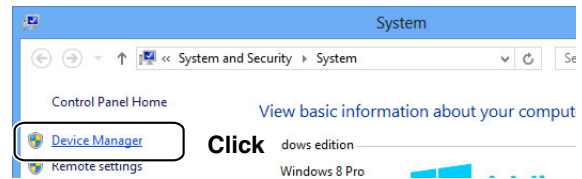
- ⑫ Click the folder icon on the taskbar.



- ⑬ Right-click "Computer," and then click "Properties."



- ⑭ Click [Device Manager].
- "Device Manager" appears.



- ⑮ Double-click "Ports (COM & LPT)" on the "Device Manager" screen.



- When the driver is completely installed, "Silicon Labs CP210x USB to UART Bridge (COM\*)" is displayed. The screen shows the USB serial COM port number "4."

• The COM port number is displayed instead of "\*". If the transceiver has two COM ports, two COM port numbers are displayed.

• Depending on the PC environment, the COM port number may differ.

• If "!" or "x" is displayed on the "Device Manager" screen, the driver may not be properly installed. In such a case, first uninstall the USB driver, then reinstall it.

### 3. DRIVER INSTALLATION

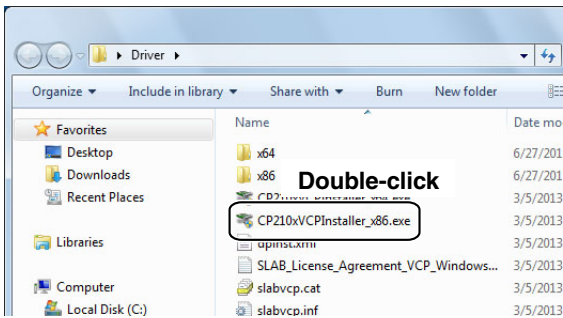
#### Windows 7

**NOTE:**

- **NEVER** connect the USB cable between the transceiver and the PC until AFTER the USB driver has been installed.
- This USB driver is not supported by the automatic recognition system.

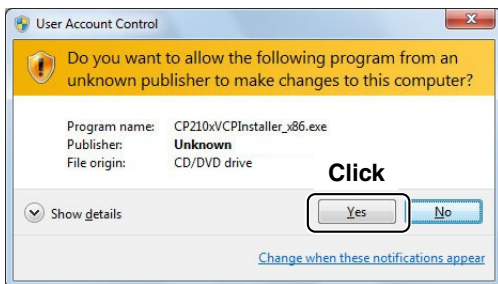
/// The displayed dialogue boxes, indications or operations may differ slightly from the following instructions, depending on your system version and settings.

- ① Make sure that the transceiver and PC are not connected.
- ② Start Windows.
  - Quit all other applications if any are running.
- ③ Double-click the USB driver installer in the “Driver” folder.
  - If you want to install to the 32 bit version OS, double-click “CP210xVCPInstaller\_x86.exe.”
  - If you want to install to the 64 bit version OS, double-click “CP210xVCPInstaller\_x64.exe.”

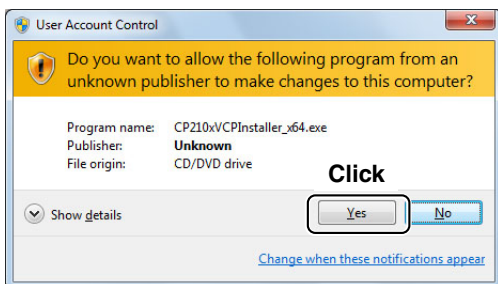


(32 bit version screen is shown.)

- ④ When the “User Account Control” dialogue box appears, click [Yes].

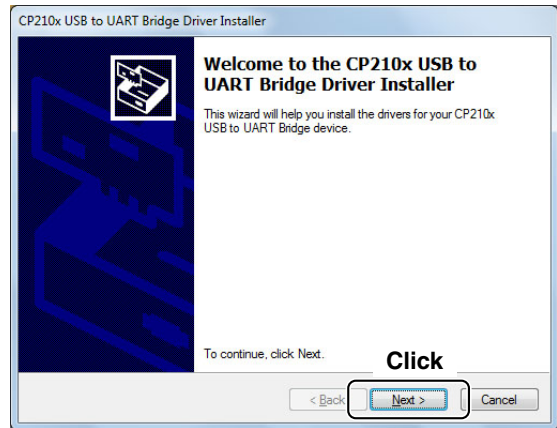


(32 bit version screen is shown.)

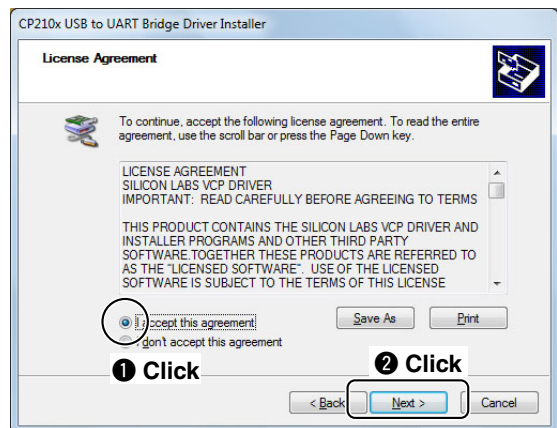


(64 bit version screen is shown.)

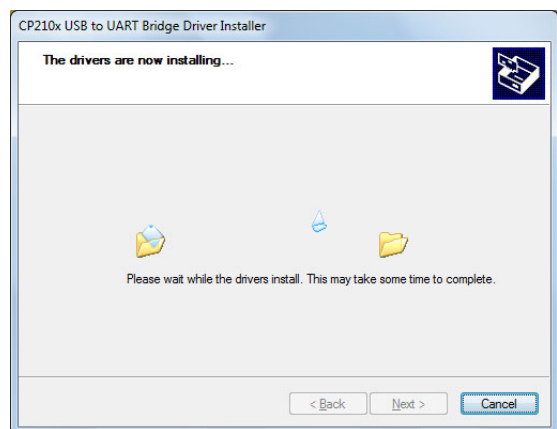
- ⑤ When the install screen appears, click [Next].



- ⑥ The “License Agreement” dialogue box appears. Read the agreement, and click the radio button next to “I accept this agreement,” and then click [Next].



- ⑦ Windows starts installing the driver.

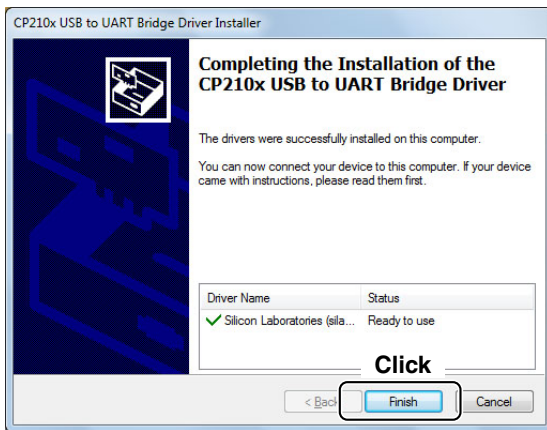


☞ Continued on the next page.

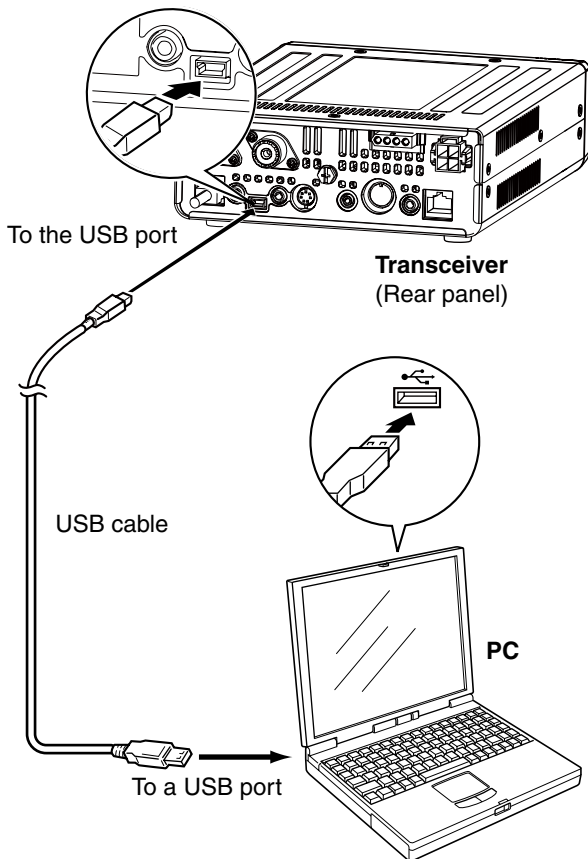
### 3. DRIVER INSTALLATION

#### Windows 7 (Continued)

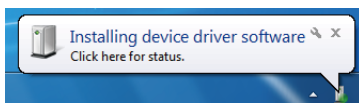
- ⑧ After the installation has completed, click [Finish].



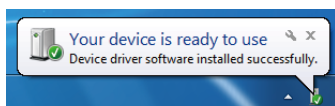
- ⑨ After restarting the PC, connect the USB cable between the transceiver and the PC, as shown below.
- Be sure to check the USB cable connector shape.



- ⑩ Turn ON the transceiver's power.
- "Installing device driver software" appears.
  - The USB audio driver is also automatically installed.



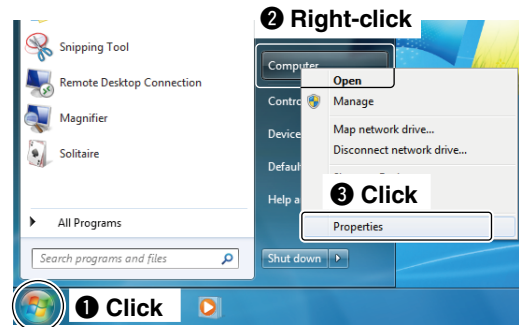
- ⑪ This dialogue appears when the driver installation has been completed.



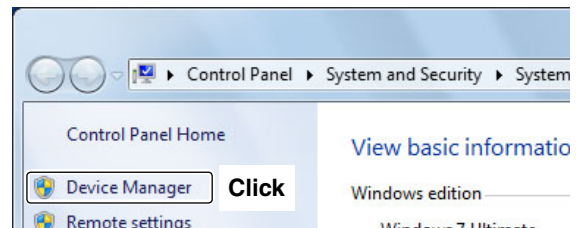
Depending on your system version and settings, you may be prompted to restart the PC. In this case, follow the instructions on screen.

After the driver installation has been completed, confirm the port connection and port number.

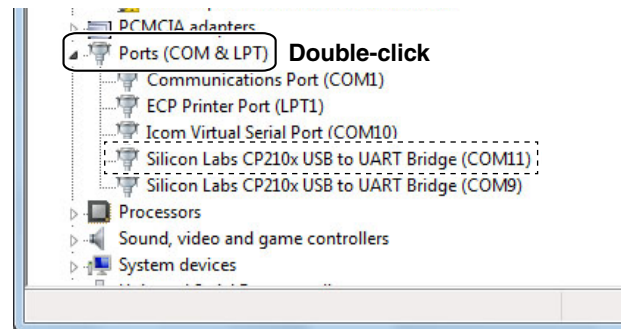
- ⑫ Click the Windows "START" icon.  
⑬ Right-click "Computer" in the <Start> menu, and then click "Properties."



- ⑭ Click [Device Manager].
- "Device Manager" appears.



- ⑮ Double-click "Ports (COM & LPT)" on the "Device Manager" screen.



When the driver is completely installed, "Silicon Labs CP210x USB to UART Bridge (COM\*)" is displayed. The screen shows the USB serial COM port number "11."

The COM port number is displayed instead of "\*". If the transceiver has two COM ports, two COM port numbers are displayed. Depending on the PC environment, the COM port number may differ. If "!" or "x" is displayed on the "Device Manager" screen, the driver may not be properly installed. In such a case, first uninstall the USB driver, then reinstall it.

## 4. FOR YOUR REFERENCE

After the PC and transceiver are connected, you can remotely control the transceiver using the CI-V commands. The transceiver has a conversion function between USB and Serial. So, if the transceiver is connected to a PC with the USB cable, the CT-17 is not required for the Icom Communications Interface-V (CI-V) operation. The [USB] port and [REMOTE] jack can simultaneously be used. So CI-V operation can be done from a PC, even if an Icom CI-V product, such as a transceiver, a receiver or a linear amplifier (IC-PW1/EURO), is connected to the [REMOTE] jack of your transceiver.

### 4-1 COM Port setting

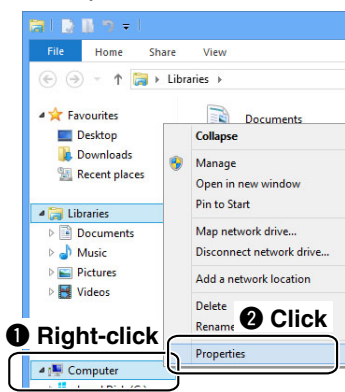
To change the COM Port number setting, connect the transceiver to the PC and then turn ON the transceiver power after the driver installation has been completed.

#### Windows 8

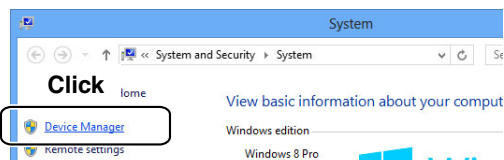
- ① Click the folder icon on the taskbar.



- ② Right-click "Computer," and then click "Properties."

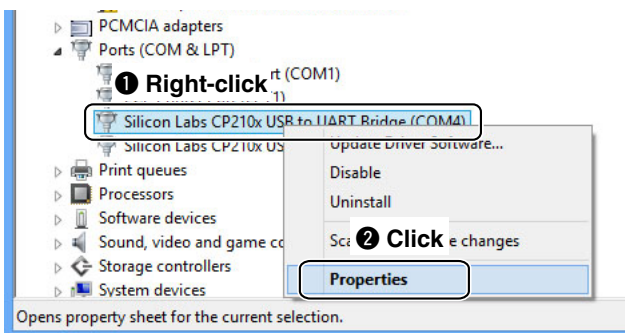


- ③ Click [Device Manager].  
• "Device Manager" appears.

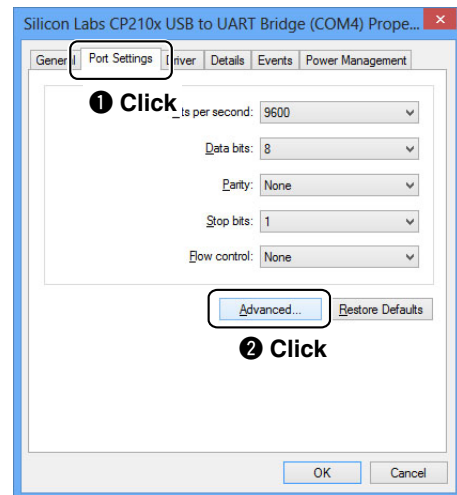


- ④ Right-click "Silicon Labs CP210x USB to UART Bridge (COM\*)" and then click "Properties."

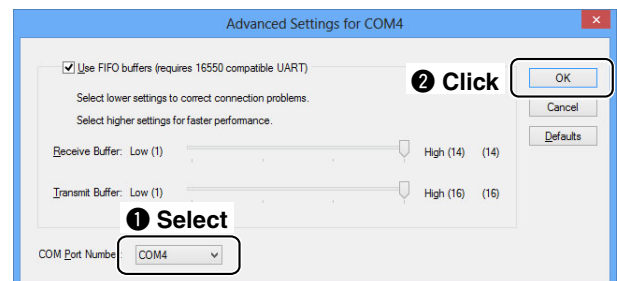
/// The COM port number is displayed instead of  
/// "\*". If the transceiver has two COM ports, two  
/// COM port numbers are displayed.



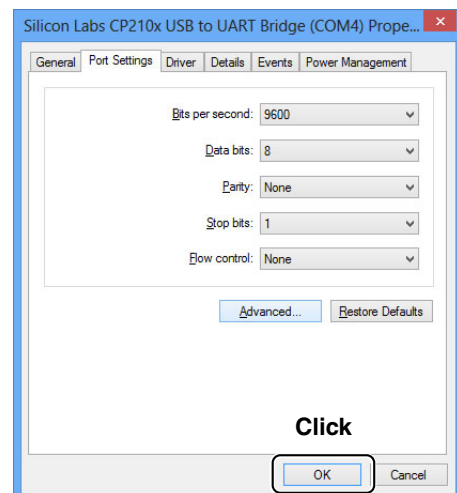
- ⑤ Click the [Port Settings] tab, then click [Advanced...].



- ⑥ Select the desired COM port number, then click [OK].



- ⑦ Click [OK] to close the screen.

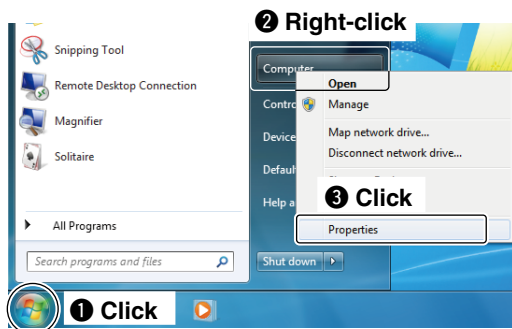


## 4. FOR YOUR REFERENCE

### 4-1 COM Port setting (Continued)

#### Windows 7

- 1 Click the Windows “START” icon.
- 2 Right-click [Computer] in the <Start> menu, and then click [Properties].

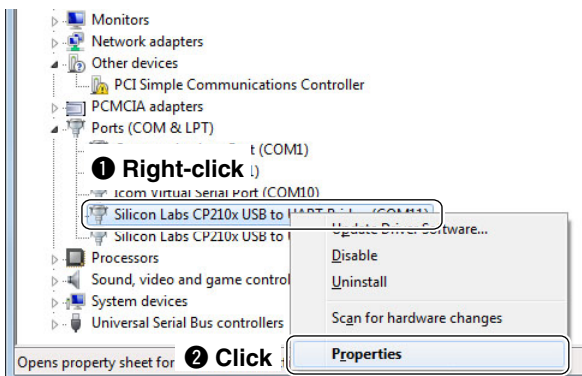


- 3 Click [Device Manager].
  - “Device Manager” appears.

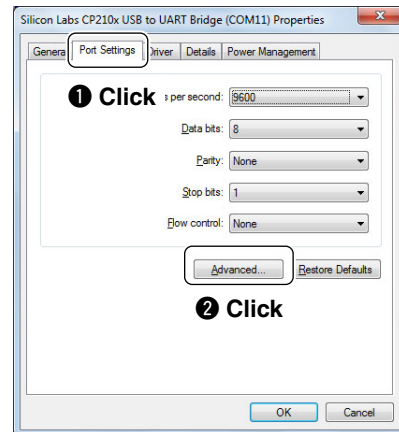


- 4 Right-click “Silicon Labs CP210x USB to UART Bridge (COM \*)” and then click “Properties.”

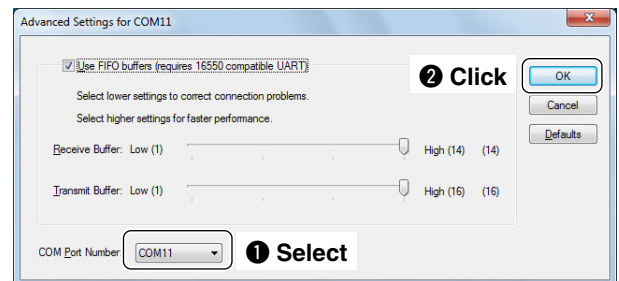
/// The COM port number is displayed instead of “\*”. If the transceiver has two COM ports, two COM port numbers are displayed.



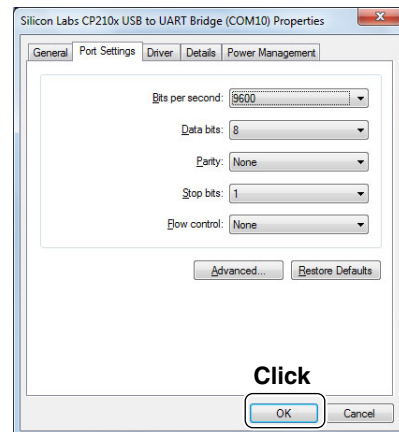
- 5 Click the [Port Settings] tab, then click [Advanced...].



- 6 Select the desired COM port number, then click [OK].



- 7 Click [OK] to close the screen.





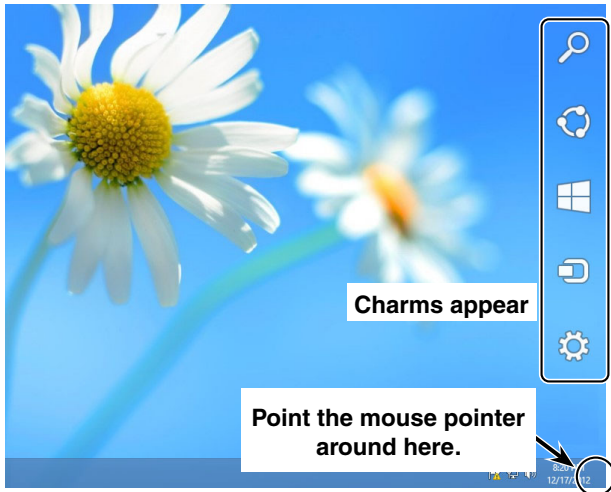
## 4. FOR YOUR REFERENCE

### 4-2 Uninstalling the driver

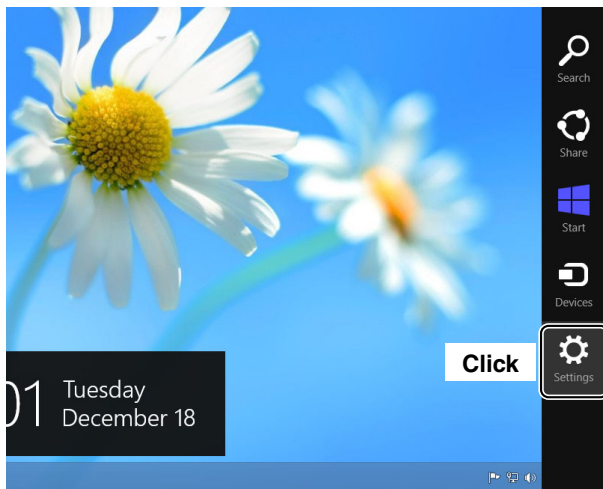
The displayed dialogue boxes or indications may differ slightly from the following instructions, depending on your system version and settings.

#### Windows 8

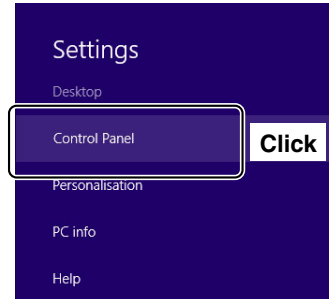
- 1 Start Windows.
- 2 Point the mouse pointer around the right-bottom corner of the desktop.
  - The charms appear on the right of the desktop.



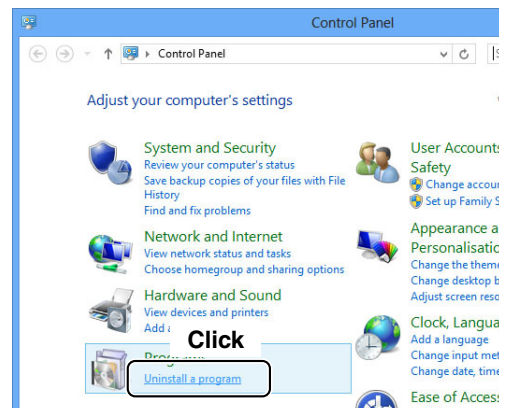
- 3 Click the "Settings" charm.



- 4 Click the "Control Panel."

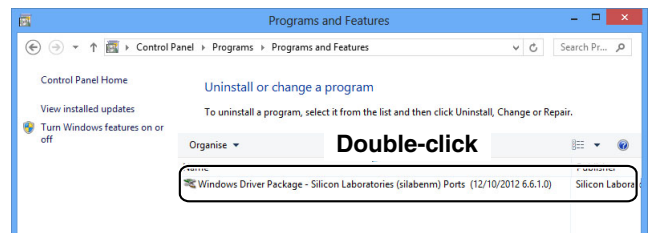


- 5 Click the "Uninstall a program." menu.
  - The "Uninstall or Change a Program" menu appears.



- 6 Double-click "Windows Driver Package - Silicon Laboratories (silabnm) Ports (12/10/2012 6.6.1.0)."

When "User Account Control" dialogue box appears, click [Continue].



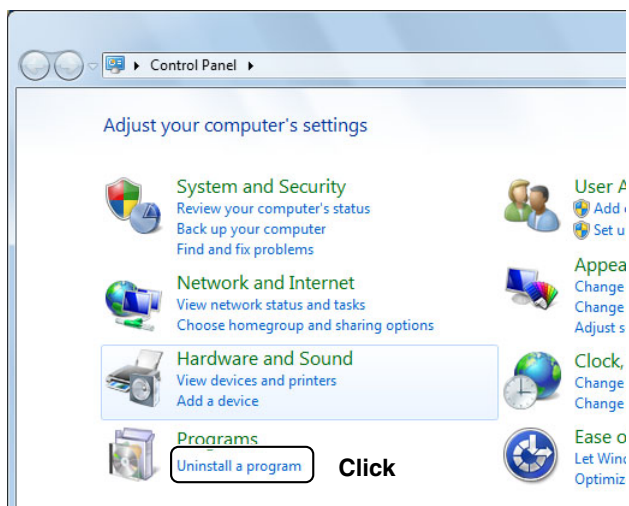
- 7 Follow the instructions on the screen to uninstall.

## 4. FOR YOUR REFERENCE

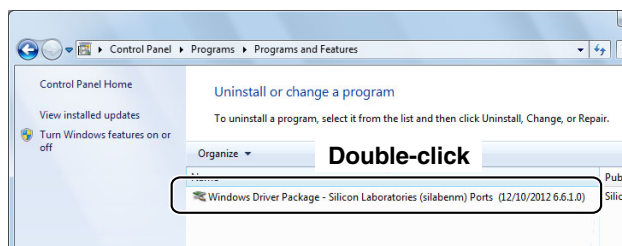
### 4-2 Uninstalling the driver (Continued)

#### Windows 7

- ① Start Windows.
- ② Select the “Control Panel” in the Start menu.
  - The control panel appears.
- ③ Click the “Uninstall a program.”
  - The “Uninstall or Change a Program” menu appears.



- ④ Double-click “Windows Driver Package - Silicon Laboratories (silabnm) Ports (12/10/2012 6.6.1.0).”
  - /// When “User Account Control” dialogue box appears, click [Continue].



- ⑤ Follow the instructions on the screen to uninstall.

### 4-3 Audio considerations

**[Installed audio player]** (Windows standard software, and so on.)

For modulation input from the PC, the transceiver's USB port must be selected as the modulation input source connector.

You can set the modulation input source connector in the Set mode, or using the CI-V system.

See the appropriate page in the transceiver's instruction manual for details.

If you monitor the PC's received audio from an external PC speaker, or use the audio from an external PC microphone as the modulating input, read the instruction manual that comes with the software for details.